

# New Life for Problem Walls

The Glass Textile Architectural Wall Finish System and Designer Collection provide texture, color and performance to resurface problem walls without replacing them, or reinforce regular drywall for a more durable surface. A system solution is recommended for each type of problem surface, and specific installation instructions are available upon request. The basic system is composed of 3 parts: glass textile wallcovering, adhesive, and a paint coating.



**Mold and mildew** | Reduce the risk of mold and mildew. The combination of Glass Textile and a latex paint provides a breathable wall finish that can reduce the risk of mold and mildew. Walls must be free of mold and mildew before applying the Glass Textile. Instructions are available upon request.



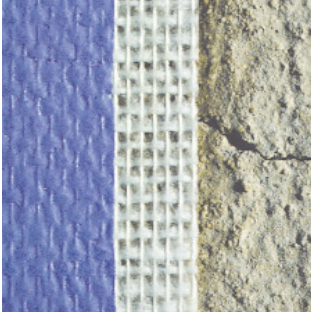
**Damaged drywall** | Glass Textile adds a new decorative finish over damaged drywall that has occurred from the removal of vinyl wallcovering. Remove loose and separated facing paper, then sand the area. Apply one coat of a damaged drywall sealer and allow to dry. Apply skim coat and allow to dry. Apply pre-wallcovering primer and allow to dry. Apply the Glass Textile according to installation instructions and finish with desired paint coating. It can be installed to strip off without further drywall damage when using proper primer and adhesives.



**Masonry** | Cover up masonry with Glass Textile for a fresh, clean look and uniform surface. The heavier textures are recommended to help camouflage small surface imperfections and bridge narrow grout lines and cracks. Sand and/or scrape the block to knock off any high points and to even out the surface. Fill the mortar joints and holes with a block filler to level the block and provide a flat, uniform surface. If blocks are painted, clean with TSP solution, rinse, and let dry thoroughly. If blocks are unfinished, apply an acrylic primer/sealer. Allow to dry completely. For best results, skim coat the entire surface. Prime the surface with pre-wallcovering primer and allow to dry. For a secure bonding, a vinyl over vinyl adhesive is recommended. Apply the Glass Textile according to installation instructions and finish with desired paint coating.

## Glass Textile Wall Finish System

# New Life for Problem Walls



**Cracked plaster** | Resurface old cracked plaster walls and ceilings. Bare plaster must be cured and hard. Textured, porous, powdery or soft plaster should be treated with a vinegar solution until the surface is hardened. Surface must be smooth and free from surface chalk. If plaster walls are painted, surface must be secure, clean, smooth and dry. Prime the wall with a pre-wallcovering primer, and allow to dry. For a secure bonding, a vinyl over vinyl adhesive is recommended. Apply Glass Textile according to installation instructions and finish with desired paint coating. Glass Textile can also reinforce cracks from earthquake damage. Customers report that the system held up during subsequent quakes.



**Tile** | Reduce the renovation budget. Cover up ceramic tile instead of replacing, by resurfacing it with Glass Textile. Thoroughly clean the tile with TSP, rinse, and allow to dry. Fill the joints with a block filler, and skim coat surface for best results. Prime the surface with an appropriate primer to promote proper bonding. Apply Glass Textile according to installation instructions and finish with desired paint coating.



**Knock-down texture** | Failing knockdown texture? No problem. Glass Textile can reinforce and resurface the textured walls very cost effectively. Scrape surface and knock off high points, and smooth damaged cracked and peeled areas for a smoother, uniform wall surface. Heavier textures of Glass Textile are recommended to hide minor surface imperfections. Apply acrylic wallcovering primer/sealer and allow to dry. Apply Glass Textile according to installation instructions and finish with desired paint coating. Glass Textile is easier to maintain and redecorating is a snap with a fresh coat of paint. It also adds stability to the surface.



**Wood paneling** | Update tired and outdated old wood paneling with Glass Textile. Most Glass Textile patterns will effectively bridge narrow grooves. The heavier patterns can be installed directly over paneling without filling the grooves. To ensure the best results, it is recommended to fill the grooves. Assure all paneling seams are secure to the wall and edges are even and not protruding. Thoroughly clean the paneling with TSP, rinse, and let dry completely. Prime paneling with pre-wallcovering primer. For a secure bonding, a vinyl over vinyl adhesive is recommended. Apply Glass Textile according to installation instructions, and finish with desired paint coating. Glass Textile updates the room more cost effectively than replacing the paneling.

## Glass Textile Wall Finish System

# Applications For Renovation Or New Construction

Glass Textile Wall Finish Systems have been used worldwide for over 40 years in all types of commercial and residential applications. Glass Textile has a very long life, is easy to maintain, can be renewed by repainting. It reinforces the walls for durability, resurfaces problem walls without replacing, and where redecorating is required every 5 to 7 years, Glass Textile offers very favorable life cycle costs. Glass Textile is an environmentally responsible interior wall finish and qualifies for LEEDS green building credits.



**Healthcare facilities** are challenged with finding wall treatments that not only contribute a decorative element, but also meet their performance criteria. Glass Textile offers color and texture to provide a feeling of warmth and comfort, while providing the durability, ease of maintenance, and cost effectiveness for the life of the walls. For high traffic areas, specify a waterborne epoxy, semi gloss or gloss paint coating, or other coatings formulated for a highly durable finish.



**In commercial office buildings**, Glass Textile offers flexibility in design and finish options for wall surfaces while meeting the needs of any type of tenant. It is a natural choice where durability, safety and health are a concern. It is also fire retardant, non-toxic and offers a breathable system to reduce the risk of mold and mildew. With no dye lot concerns and consistent availability of timeless pattern designs, redecorating becomes very cost effective.



**Healthy and safe environments** are key issues for all schools today. Indoor air quality play an important role where removing environmental hazards are key to a healthy learning environment. Glass Textile is considered an environmentally friendly material as it is an alternative to (vinyl) PVC's. It provides schools with a surface that greatly reduces the maintenance of the walls, improves the appearance of the school, meets the fire rating standard and it can be easily installed and repaired by the school maintenance crew. In addition, the 40+ year life span of the system provides the school a significant cost savings on a life cycle basis.



**Replacing the wallcovering** every 5 to 7 years is a great expense for hotels not only in renovation cost, but also having rooms that are losing revenues. Many hotels have saved thousands of renovation dollars with the glass textile wall finish system because it doesn't have to be replaced — simply repaint to redecorate. Glass Textile provides hotel owners with a highly durable, easy to maintain, long life cycle wall treatment that looks good for decades. For hotels in high humidity areas, Glass Textile offers a 5 year mold and mildew guarantee, proven to control mold and mildew thereby greatly reducing the hotel owners renovation budget.

## Glass Textile Wall Finish System



# Applications For Renovation Or New Construction



**Housing projects** require highly durable, long lasting, and easy to maintain wall surfaces. With a life cycle of at least 40+ years, Glass Textile reduces maintenance costs. It is easy to maintain and when it is time to redecorate, simply freshen the walls with a new coat of paint. Most patterns can be repainted up to 10 times without losing the pattern definition. Specify a waterborne epoxy coating for the best long-term results.



**Museums** like the Louvre in Paris, as well as museums in North America have used the glass textile wallcovering system for years. Glass Textile offers texture and custom colors and when combined with the proper lighting, assures each exhibit of a worthy presentation. And when the exhibit changes, the flexibility of changing the ambiance by simply repainting only enhances a museum's capabilities. In addition, Glass Textile is nontoxic, nonflammable, easy to maintain, easy to repair and available in a variety of decorative textures.



**Government facilities** are now requiring interior wall treatments meet new indoor air quality standards for emissions and eliminate mold and mildew on the walls. Glass Textile not only meets IAQ standards, but also offers a highly breathable wall treatment and a 5 year mold and mildew guarantee. These features play a key role in qualifying for LEEDS green building credits.



**Glass Textile** is rapidly becoming the DIY market's new best friend for weekend projects. It's "**easy to install and paint**" features make any small to large wallcovering job a more pleasant home decorating project. And when it's time to redecorate, simply repaint in the latest paint colors. Even homeowners in certain climates experience mold and mildew problems on their walls. When painting Glass Textile with a latex paint, it is highly breathable and reduces the risk of mold and mildew.

## Glass Textile Wall Finish System