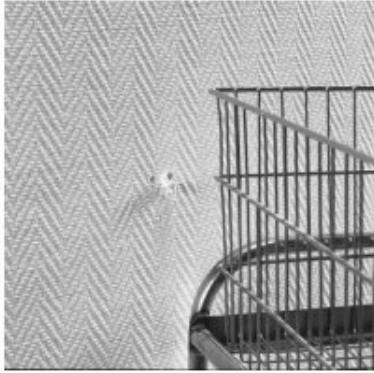




TEXTURGLAS® | REPAIR INSTRUCTIONS



1. Texturglas is very durable, however a forceful or sharp impact might damage the wallcovering. But repair is fast and easy.



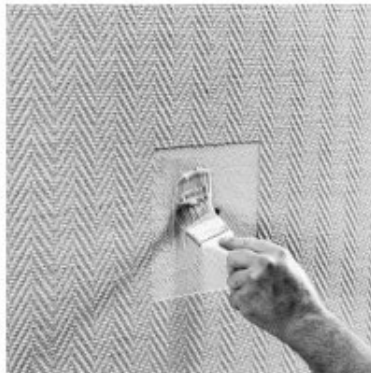
2. Cut a piece of Texturglas several inches larger than the damaged area. Carefully line up the pattern or texture with the original wallcovering. Then tape it into position over the damaged area.



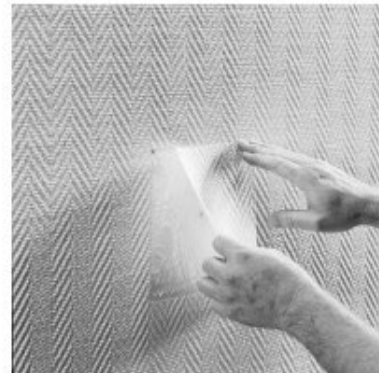
3. Double cut both the new piece of Texturglas and the damaged piece to ensure a precise seam when the repair is finished.



4. Remove both the new piece of Texturglas and the damaged piece.



5. If the wall is not badly damaged, there may be no need to repair the wall itself. Just apply adhesive to the area where the wallcovering was removed. If wall damaged, you may need to repair the area with spackling or drywall compound.



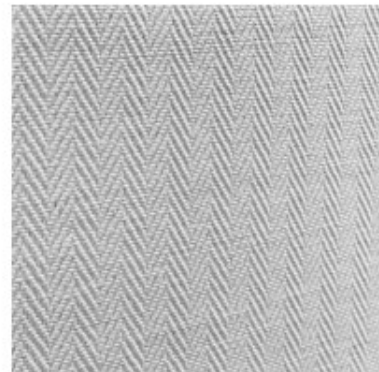
6. Place the Texturglas patch onto the repair area, and carefully line up the pattern or texture.



7. Firmly brush or use plastic application to smooth texturglas. There is no need to roll edges or seams.



8. Paint the patch and adjacent areas with a roller using the same paint that was originally used on the wall.



9. The combination of paint and Texturglas pattern result in a neat professional patch.

For additional assistance, call Roos International at 1-800-888-2776